

KENT COUNTY COUNCIL

HEALTH AND WELLBEING BOARD

MINUTES of a meeting of the Health and Wellbeing Board held in the Council Chamber, Sessions House, County Hall, Maidstone on Wednesday, 20 September 2017.

PRESENT: Mr P J Oakford (Chairman), Dr B Bowes (Vice-Chairman), Cllr S Aldridge, Dr F Armstrong, Mr I Ayres, Mr P B Carter, CBE, Dr S Chaudhuri, Mr G K Gibbens, Cllr F Gooch, Mr R W Gough, Mr S Inett, Mr A Ireland, Dr S Lundy (Substitute for Mr S Perks), Dr T Martin, Dr S MacDermott (Substitute for Dr E Lunt), Ms A Ogilvie (Substitute for Ms H Carpenter), Mr A Scott-Clark, Ms A Singh and Dr R Stewart

IN ATTENDANCE: Mrs A Hunter (Principal Democratic Services Officer)

UNRESTRICTED ITEMS

296. Chairman's Welcome
(Item 1)

The Chairman said he was assuming that Members of the Board had read the papers and he would, therefore, not ask officers to introduce or summarise the reports.

297. Apologies and Substitutes
(Item 2)

Apologies for absence were received from Dr Lunt, Ms Carpenter, Ms Davies, Dr Kumta, Ms Cox and Mr Perks.

Dr MacDermott, Ms Ogilvie and Dr Lundy attended as substitutes for Dr Lunt, Ms Carpenter and Mr Perks respectively.

298. Declarations of Interest by Members in items on the agenda for this meeting
(Item 3)

Dr Chaudhuri declared an interest in item 7 on the agenda - Pharmaceutical Needs Assessment as he was a member of a dispensing practice and a member of the local professional network for pharmacists. As this interest was not considered to be a Disclosable Pecuniary or Other Significant Interest as defined in the Code of Conduct he remained in the meeting and took part in the discussion.

299. Minutes of the Meeting held on 14 June 2017
(Item 4)

Resolved that the minutes of the meeting held on 14 June 2017 are correctly recorded and they be signed by the Chairman.

300. Health and Wellbeing Board - future direction and fitness for purpose
(Item 5)

- (1) Mr Oakford said it had been agreed at the last meeting of the Board to undertake a review of the fitness for purpose and the future direction of the Kent Health and Wellbeing Board and thanked those who had contributed.
- (2) David Whittle (Director of Strategy, Policy, Relationships and Corporate Assurance) introduced the report which set out the results of the review and proposals for the future. He drew particular attention to: the background to and the development of the Board; the membership and management of meetings of the Board; the relationship of the Board with local health and wellbeing boards and the Children's Health and Wellbeing Board; and the role of the Board vis-à-vis the Sustainability and Transformation Plan (STP).
- (3) Members said the STP was an enormous challenge, the HWB needed to be close to the strategic commissioning of services and to focus on local care. Comments were also made about the role of the HWB in cutting across agendas and identifying where it could make a difference as well as its role in relation to the 0-25 Health and Wellbeing Board and the local health and wellbeing boards.
- (4) There was a general consensus that the HWB would continue in its present format and with its work in relation to prevention and local care until there was agreement on any future proposal.
- (5) Resolved that:
 - (a) The findings of the review be noted;
 - (b) The Board should seek a role within the governance arrangements of the Kent and Medway STP;
 - (c) Following conversations with Medway Council and the Chief Executive of the STP a further paper about the potential for a joint health and wellbeing board with Medway be considered at the next meeting of the Board on 22 November 2017.

301. NHS preparations for and response to winter in Kent 2017/18

(Item 6)

- (1) Mr Oakford said that NHS England had been unable to attend this evening's meeting to present the report and asked the Board members if they wished to discuss, or defer the report to the next meeting.
- (2) Members of the Board expressed concern about readiness for winter particularly in relation to 'flu vaccinations, plans to keep people out of hospital, and the fact that the system response to winter had become increasingly fragile over recent years. Comments were also made about recent meetings with NHS England about preparedness for winter and the 'flu vaccination campaigns and the fact that many organisations were aware of the anticipated demands over winter and were just starting to prepare.

- (3) Resolved that a letter be written to the author of the report saying the Board was not reassured about the adequacy of plans to prepare for winter, asking for a detailed report from each A&E Delivery Board about their plans for winter and seeking an explanation for non-attendance at this meeting.

302. Pharmaceutical Needs Assessment

(Item 7)

- (1) The Health and Wellbeing Board received a report setting out the statutory requirements for the development and consultation on a pharmaceutical needs assessment.
- (2) In response to questions and comments it was confirmed that the needs of hard to reach groups had been taken into account in developing plans for the renewal of the pharmaceutical needs assessment (PNA). It was also said that, although funding for the national pharmacy contract had been cut by 4% with further cuts anticipated, the Local Pharmacy Committee Steering Group was not aware that any pharmacies had ceased trading. It was, however, aware that some independent pharmacies had been sold to big corporations.
- (3) The desirability of integrating the development of the PNA with the STP was acknowledged.
- (4) Resolved that:
 - (a) Requirements for producing and publishing a Pharmaceutical Needs Assessment be noted;
 - (b) Consultation on the revised PNA for 60 days commencing in October be agreed;
 - (c) The consultation document be circulated to all Health and Wellbeing Board Members at the commencement of the consultation.

303. Healthwatch Annual Report 2016/17

(Item 8)

- (1) Steve Inett (Chief Executive Officer) gave a presentation which is available on-line as an appendix to these minutes.
- (2) In response to questions and comments, he said an offer from MacMillan to work with gypsies and travellers had been received and would be followed up.
- (3) Healthwatch was thanked for the support it had provided to CCGs and the usefulness of the "help cards" was endorsed.
- (4) Resolved that the report be noted.

304. Kent Health and Wellbeing Board Annual Report 2016-2017

(Item 9)

Resolved that the contents of the report be noted.

(Item 9)

305. Kent Integration and Better Care Fund Plan 2017-2019

(Item 10)

- (1) Anu Singh (Corporate Director of Adult Social Care) said it was important to know the totality of all organisations spending on adult social care.
- (2) Resolved that the report be noted.

306. 0-25 Health and Wellbeing Board

(Item 11)

The minutes of the 0-25 Health and Wellbeing Board held on 28 March 2017 were noted.

307. Minutes of the Local Health and Wellbeing Boards

(Item 12)

The minutes of local health and wellbeing boards were received as follows:

Ashford - 19 July 2017

Dartford, Gravesham and Swanley – 28 June 2017

Thanet – 20 July 2017

West Kent – 18 April 2017 and 20 June 2017

308. Date of Next Meeting - 22 November 2017

(Item 13)



Healthwatch Kent

Kent Health & Wellbeing Board Sep 2017

Healthwatch Kent : Who are we?

- We are the consumer champion for health & social care
- Our aim is to improve services by ensuring local people's voices are heard
- FREE Information & Signposting service

0808 801 0102

info@healthwatchkent.co.uk



Our Reach

- We have had direct contact with over 7500 people via our Freephone line, community engagement, hospital information stalls and projects
- We gave out nearly 6000 pieces of promotional material
- Thousands of Kent residents will have seen us on our Big Red Bus tour, on ITV & BBC news, our press releases in local papers and news websites, and heard us on Radio Kent throughout the year.



Outcomes

- We spoke to over 300 people about the Children & Adolescent Mental Health service. Our recommendations are part of the new service which recently commenced



Outcomes

- We spoke to over 100 people about their experience of being discharged from hospital in North Kent. We have worked on a new patient leaflet explaining the discharge process which is currently being piloted with 20,000 patients



Outcomes

- Our report on changes to repeat prescriptions is being used to inform all 7 Clinical Commissioning Groups as they work to reduce the amount of money wasted on unwanted medicines



Outcomes

- Our findings about people's experience of autism services has been used as part of a national report highlighting the challenges that parents and young people with autism are facing



Outcomes

- We have escalated 11 cases of concern for patient safety to the Care Quality Commission and Kent County Council this year. All of our escalations have been investigated and in one instance the care home was prevented from accepting new residents until measures were put in place.



Outcomes

- We have established a new Kent wide Physical Disability Forum which is now a platform from which people with a physical disability can effectively raise their voice and be heard by the right people. Organisations and commissioners of services are working with the Forum around any changes or developments to services



Volunteers



Sustainability & Transformation Partnership - Support

- Recruited and supported members of the public to join the Kent & Medway Patient & Public Advisory Group and manage their expenses
- Have acted as interim chair since it started meeting
- Represented the group at the STP Programme Board, the development of the Integrated Impact Assessment and other working groups
- Supported it with use of our video conferencing facilities to ensure accessibility



Sustainability & Transformation Partnership - Scrutiny

- Volunteers in Healthwatch Kent steering Group are using our Consultation and Engagement Best Practice guides to scrutinise aspects of the STP
- Currently looking at Stroke
- Feedback on listening events
- Regular meetings with STP Project Management Team and Consultants



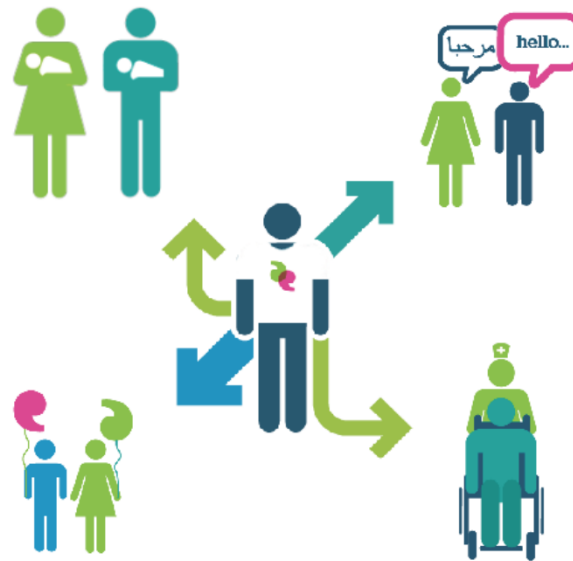
Sustainability & Transformation Partnership - Providing

- Commissioned engagement being carried out with seldom heard groups
- Undertaken by Trading Arm - Engage
- Materials such as ebriefing and discussion aids being shared with Patient & Public Advisory Group
- More detail about how these roles are delineated in Steve's Blog at www.healthwatchkent.co.uk



Gypsy & Traveller

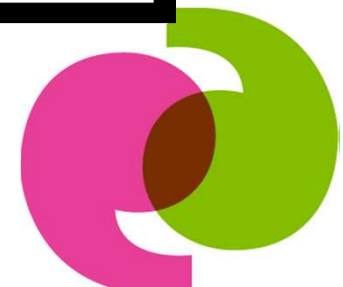
healthwatch
Kent



Healthwatch Kent
Engaging with Communities
Experiences of Gypsy & Traveller Communities in Kent
June 2017



Help Cards



Help Cards

- I need help filling in forms
- I need help reading and understanding
- I would like a doctor who is the same gender as me
- I would like to speak to someone confidentially



Help Cards

- Pledge that your organisation will support patients who present these cards at your service.
- If you wish to pledge your support, we can send you the following:
 - A supply of the cards to distribute to your own patients
 - Information to brief your staff
 - A pledge poster for you to complete and use to publicise your support in your communications and social media



THANK YOU

ANY QUESTIONS?

Steve@healthwatchkent.co.uk

